

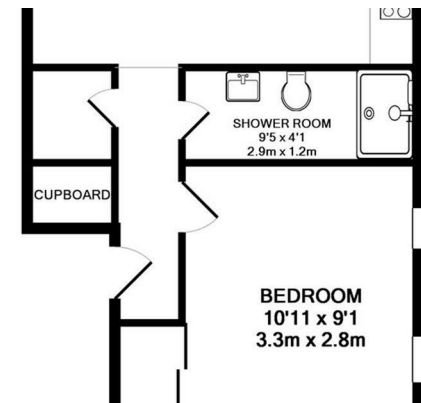
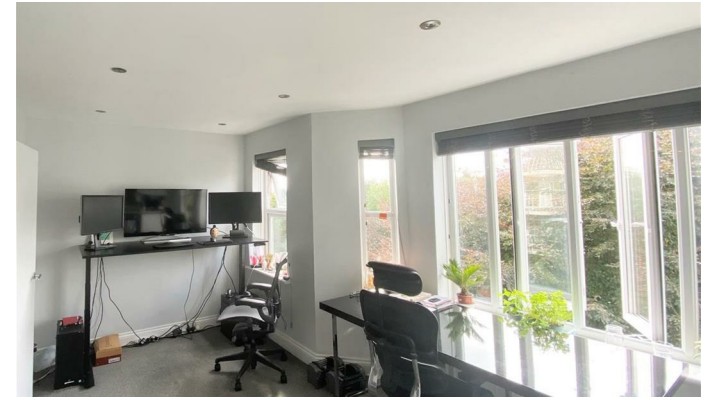
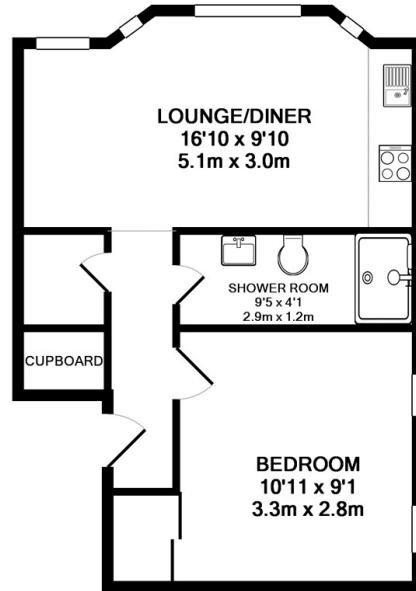
## Eaton Gardens

, Hove BN3 3TT

- Available Now
- Modern One Double Bedrooms
- Open Plan Kitchen Living Room
  - Fantastic Hove Location
  - Long term let
- VIDEO TOUR AVAILABLE
  - Second Floor Flat
  - Close To Local Amenities
- Short Walk to Hove Railway Station
  - Furniture Optional

**£1,350 PCM**

Local Authority Brighton &  
Hove City Council  
Council Tax Band A  
EPC Rating C



TOTAL APPROX. FLOOR AREA 377 SQ.FT. (35.0 SQ.M.)

Whilst every attempt has been made to ensure the accuracy of the floor plan contained here, measurements of doors, windows, rooms and any other items are approximate and no responsibility is taken for any error, omission, or mis-statement. This plan is for illustrative purposes only and should be used as such by any prospective purchaser. The services, systems and appliances shown have not been tested and no guarantee as to their operability or efficiency can be given  
Made with Metropix ©2018



**Stanfords Lettings Office**  
30-31 North Street, Brighton,  
East Sussex, BN1 1EB

**Contact**  
01273 733334  
lettings@stanfords-  
estates.com  
www.stanfords-estates.com

Agents Note: Whilst every care has been taken to prepare these particulars, they are for guidance purposes only. All measurements are approximate and for general guidance purposes only and whilst every care has been taken to ensure accuracy, they should not be relied upon and potential buyers/tenants are advised to recheck the measurements.